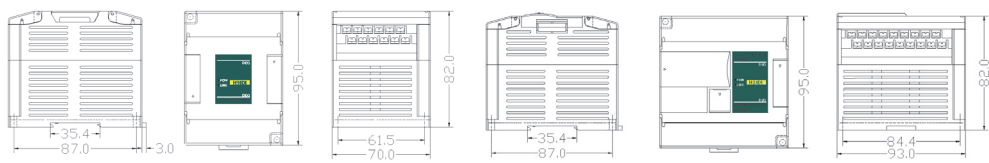


一、产品型号列表

Table with columns: 型号, 额定功率, 外形尺寸, 型号, 额定功率, 外形尺寸. Lists models like AN04AI, AN04AO, AN02AIO, AN04RC, AN04TC, AN08TC, AN04AIO-e, AN08AI, AN08AO, AN04AIO, AN08RC, AN08AI-e, AN08AO-e, AN08RC-e.



二、指示灯说明

- 1. POW: 电源指示灯, 绿色。常亮 - 电源正常; 不亮 - 电源异常。
2. LINK: 通讯指示灯。根据错误的严重程度分4种颜色指示, 从正常到严重为: 绿色, 黄色闪, 红色闪烁, 红色常亮。

LINK 指示灯状态表, 包含绿色、黄色、红色三种状态, 对应的指示灯表现、指示信息分类及参考处理方式。

三、电源规格

DC 直流电源规格表, 包含输入电压 (DC24V), 电源频率, 瞬间电涌, 允许瞬间断电时间, 24V 输出, 隔离方式, 电源保护等参数。

四、产品环境规格

环境规格表, 包含温度/湿度, 抗振动能力, 抗冲击能力, 抗干扰能力, 耐压能力, 绝缘阻抗, 使用环境等规格。

五、模拟量输入 (AI) 规格

模拟量输入规格表, 包含电压输入、电流输入、热电阻输入、热电偶输入的输入范围。

六、模拟量模块参数表 (注: CR 号就是对应的 Modbus 寄存器地址)

Large Modbus register address table with columns for CR 号 and various module parameters like input/output values, signal types, and status indicators for models AN04AI through AN08TC(-e).

说明: ①、采样次数: 0-2次, 1-4次, 2-8次, 3-16次, 4-32次, 5-64次, 6-128次, 7-256次 ②、信号类型: 0-[4,20]mA, 1-[0,20]mA, 2-[1,5]V, 3-[0,5]V, 4-[0,10]V, 5-[-10,10]V
③、热电阻信号类型: 0-Pt100, 1-Pt1000, 2-Cu50, 3-Cu100 ④、热电偶信号类型: 0-S, 1-K, 2-T, 3-E, 4-J, 5-B, 6-N, 7-R, 8-Wre3/25, 9-Wre5/26, 10-[0,20]mV, 11-[0,50]mV, 12-[0,100]mV
⑤、断线报警: 每位表示1个通道, 0-正常, 1-断线 ⑥、使用工程量标志: 每位表示1个通道, 0-否, 1-是 ⑦、通道指示灯状态: 每位表示1个通道, 0-不亮, 1-亮 ⑧、停电输出标志: 每位表示1个通道, 0-否, 1-是

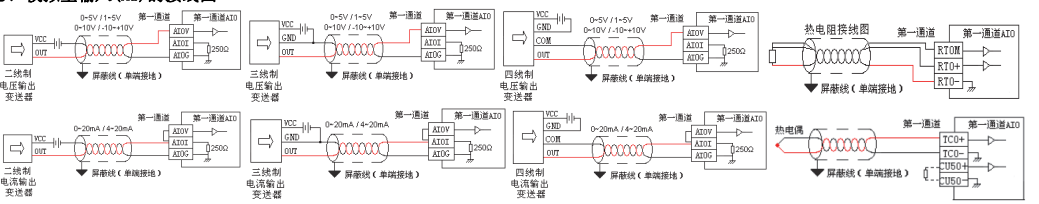
感谢您选用 ANICE MODULE, 若您对我们的产品或服务有问题或不足之处, 敬请告诉我们! 网址: http://www.anicetech.com

Table with columns: 项目, 电压输入, 电流输入, 热电阻输入, 热电偶输入. Lists resolution, input impedance, maximum input range, response time, digital input range, measurement accuracy, input indication, and isolation method.

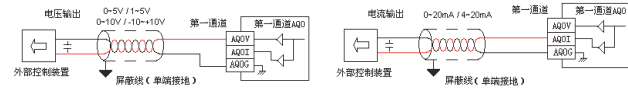
六、模拟量输出 (AQ) 规格

Table with columns: 项目, 电压型输出, 电流型输出. Lists output range, resolution, external load impedance, output indication, driving capability, response time, digital output range, measurement accuracy, and isolation method.

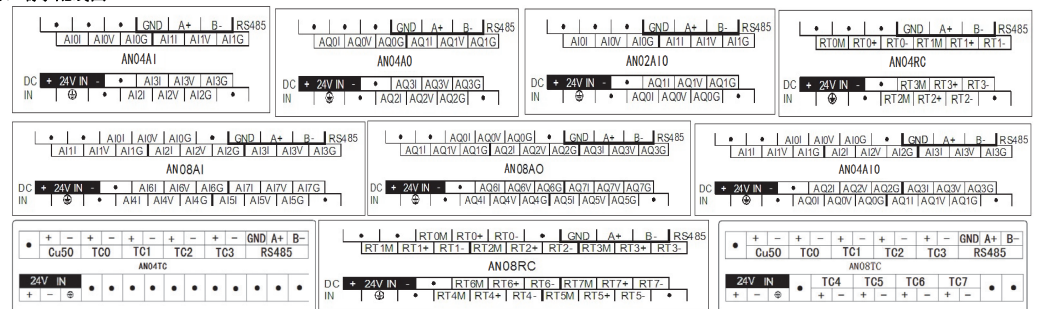
七、模拟量输入 (AI) 的接线图



八、模拟量输出 (AO) 的接线图



九、端子配线图



十、通讯地址的设定

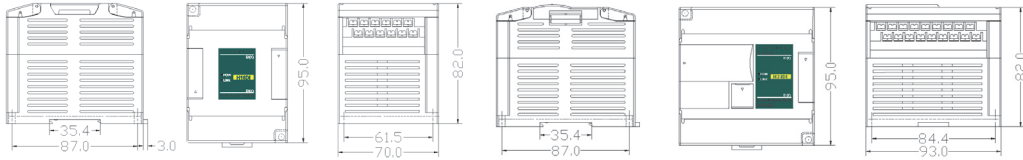
方法一: 通过模块上的编码开关修改。右图为用于设定模块地址的4位编码开关示意图, 上面为ON (1), 下面为OFF (0), 反映到模块地址

时, 用二进制表示: 第1位表示二进制的第1位 (b0), 第4位表示二进制的第4位 (b3), 把二进制数转化为十进制数即为模块地址。

- 以太网模块出厂默认 IP 地址: 192.168.1.111

1.Product Model List

Table with 6 columns: Model, Power Consumption, Dimension, Model, Power Consumption, Dimension. Lists models like AN04AI, AN04AO, etc.



2. Indicator Description

① POW: Power indicator, green. Continuous ON - Power good; Continuous OFF - Power error. ② LINK: Communication indicator, contains 4 different colors: green, flashing yellow, flashing red and continuous red, users should take different actions accordingly.

Table with 3 columns: State of the LINK Indicator, Indication Information, Actions to Take. Describes indicator behaviors like Continuous OFF, Continuous ON, etc.

3. Power Supply Specification

Table with 2 columns: Item, DC Power Supply. Lists specifications for power supply voltage, frequency, surge, etc.

4. Environmental specifications for Product

Table with 2 columns: Item, Environment Specification. Lists operating temperature, humidity, vibration resistance, etc.

5. Analog Input (AI) Specification

Table with 5 columns: Item, Input Voltage, Input Current, Thermal Resistor Type, Thermocouple Type. Details input ranges and types.

11. Analog Module Parameter List (Note: CR represents corresponding Modbus register address, CH1 means #1 Channel)

Large parameter list table with columns for CR, AN04AI, AN04AO, AN02AIO, AN08AI(-e), AN08AO(-e), AN04AIO, AN04RC, AN08RC, AN04TC(-e), AN08TC(-e). Contains register addresses and bit descriptions.

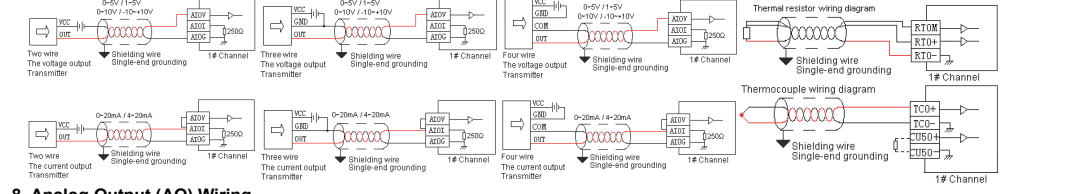
Note: ① Sampling Times: 0-2 times, 1-4 times, 2-8 times, 3-16 times, 4-32 times, 5-64 times, 6-128 times, 7-256 times. ② Signal Type: 0 - [4.20]mA, 1 - [0.20]mA, 2 - [1.5]V, 3 - [0.5]V, 4 - [0.10]V, 5 - [-1.0]V, 10 - [0.20]mV, 11 - [0.50]mV, 12 - [1.00]mV. ③ Thermocouple Type: 0 - Pt100, 1 - Pt1000, 2 - Cu50, 3 - Cu100. ④ Thermocouple Type: 0 - S, 1 - K, 2 - T, 3 - E, 4 - J, 5 - B, 6 - N, 7 - R, 8 - Wre3/25, 9 - Wre5/26, 10 - [0.20]mV, 11 - [0.50]mV, 12 - [1.00]mV. ⑤ Disconnect Alarm: Each bit represents one channel, 0-Normal, 1-Disconnect. ⑥ Engineering Value Symbol: Each bit represents one channel, 0-No Disconnect, 1-Disconnect. ⑦ State of Channel Indicator: Each bit represents one channel, 0-OFF, 1-ON. ⑧ Power Cut Symbol: Each bit represents one channel, 0-No Power Cut, 1-Power Cut.

Table with 5 columns: Item, Input Voltage, Input Current, Thermal Resistor Type, Thermocouple Type. Lists max input, response time, conversion range, etc.

6. Analog Output (AQ) Specification

Table with 3 columns: Item, Output(Voltage type), Output(Current type). Lists output ranges, resolution, load impedance, etc.

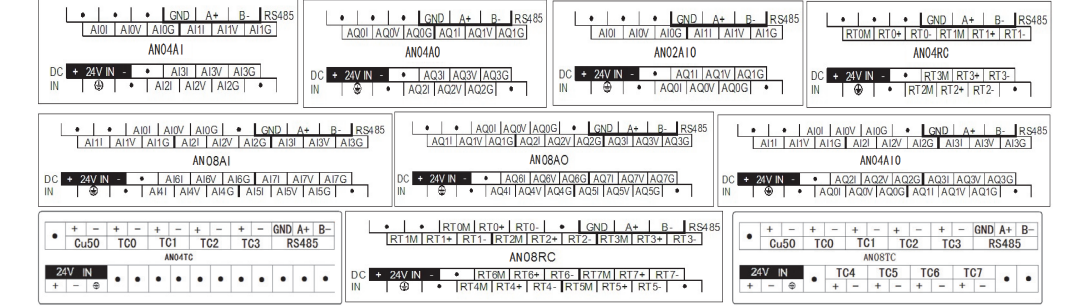
7. Analog Input (AI) Wiring



8. Analog Output (AO) Wiring



9. Terminal Wiring



10. Correspondence Address Setting

modify address by code switch. The 4-bit code switch is used to set Module's address, as shown in the figure on the right side. The black rectangle indicates the position of each code switch. When the switch was toggled to ON (1), the bit was set to 1, when the corresponding switch was toggled to OFF, bit will be set to 0. The "1" switch represents the first bit (b0), the "4" switch represents the fourth bit (b3). Therefore the 4-bit code switch is able to represents binary number range from 0000 to 1111.

- TCP module defuse IP address: 192.168.1.111.